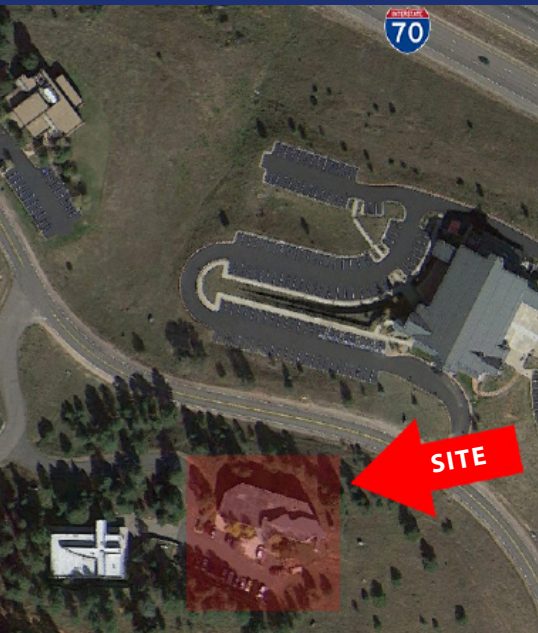




## 24928 GENESEE TRAIL ROAD Golden, Colorado 80401

### PROPERTY SPECIFICATIONS

Suite 200	1,634 RSF
Building Size	7,281 SF
Stories	2
Year Built	2000
Lease Rate	\$18.00 - \$18.50 Gross



### PROPERTY FEATURES

- Beautiful modern construction
- Outstanding views of the mountains and city
- Functional mixed use business park suitable for a variety of technical uses
- Corporate image building in a majestic foothills setting
- Abundant nearby amenities
- Located in unincorporated Jefferson County
- Local Ownership
- Connectivity through Comcast

#### FOR MORE INFORMATION CONTACT:

**RENÉE SPICER**

rspicer@gcgcre.com | 720.476.5226

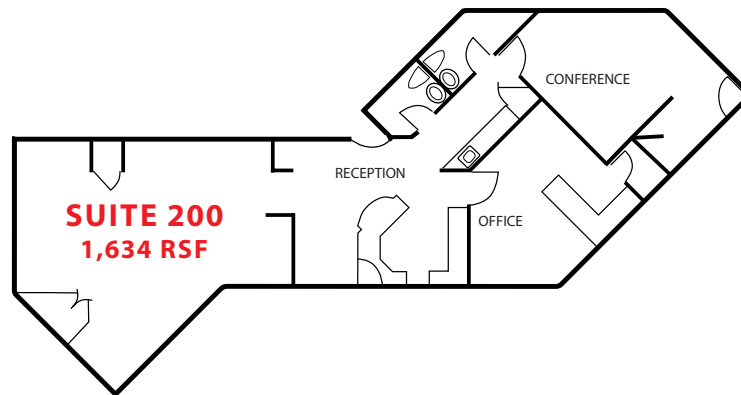
**JAMIE MACBETH**

jmacbeth@gcgcre.com | 720.476.5229



**GENESEE**  
COMMERCIAL  
GROUP, LLC

**24928 GENESEE TRAIL ROAD**  
Golden, Colorado 80401



**FOR MORE INFORMATION CONTACT:**

**RENÉE SPICER**

rspicer@gcgcre.com | 720.476.5226

**JAMIE MACBETH**

jmacbeth@gcgcre.com | 720.476.5229

GENESEE COMMERCIAL GROUP, LLC | 710 KIPLING STREET, SUITE 403 | LAKEWOOD, COLORADO 80215 | WWW.GCGCRE.COM

No warranty or representation is made as to the accuracy of the foregoing information. Terms of sale or lease and availability are subject to change or withdrawal without notice.