



25188 GENESEE TRAIL ROAD Golden, Colorado 80401

PROPERTY FEATURES

- Great foothills location with outstanding city and mountain views
- Easy access to I-70
- On-site shower & locker facilities
- Class A building
- Ample parking



PROPERTY SPECIFICATIONS

Available:	Suite 120	1,525 RSF
Lease Rate:	\$19.00-\$19.50/RSF Full Service Gross	
Building Size:	35,475 RSF	

No warranty or representation is made as to the accuracy of the foregoing information. Terms of sale or lease and availability are subject to change or withdrawal without notice.

FOR MORE INFORMATION CONTACT:

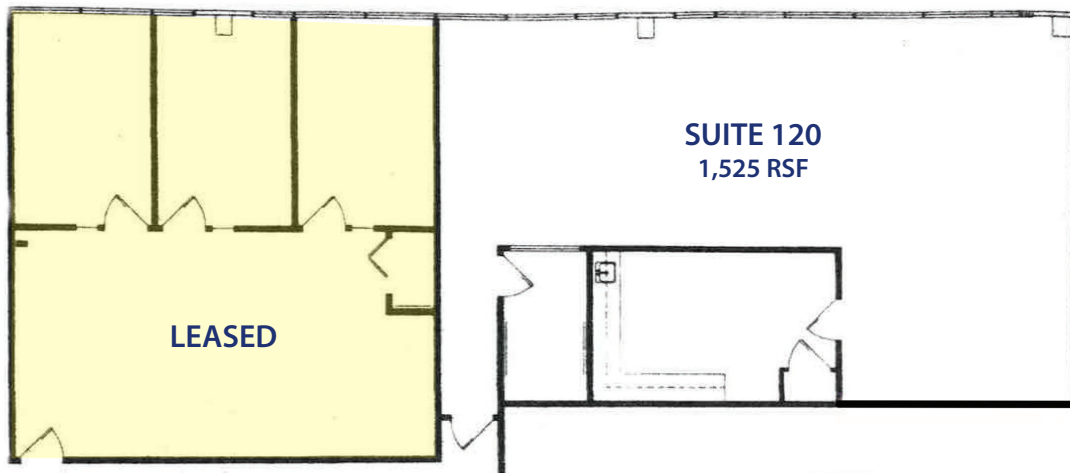
RENÉE SPICER
rspicer@gcgcre.com | 720.476.5226

JAMIE MACBETH
jmacbeth@gcgcre.com | 720.476.5229



GENESEE
COMMERCIAL
GROUP, LLC

25188 GENESEE TRAIL ROAD
Golden, Colorado 80401



FOR MORE INFORMATION CONTACT:

RENÉE SPICER

rspicer@gcgcre.com | 720.476.5226

JAMIE MACBETH

jmacbeth@gcgcre.com | 720.476.5229

GENESEE COMMERCIAL GROUP, LLC | 710 KIPLING STREET, SUITE 403 | LAKEWOOD, COLORADO 80215 | WWW.GCGCRE.COM

No warranty or representation is made as to the accuracy of the foregoing information. Terms of sale or lease and availability are subject to change or withdrawal without notice.