



26367 CONIFER ROAD Conifer, Colorado 80433



PROPERTY INFORMATION

PROPERTY FEATURES

Property Type:	Retail Investment
Sale Price:	\$1,390,000
Building Size:	9,200 SF County 9,028 RSF
Land:	43,500 SF
Parking:	43 Spaces

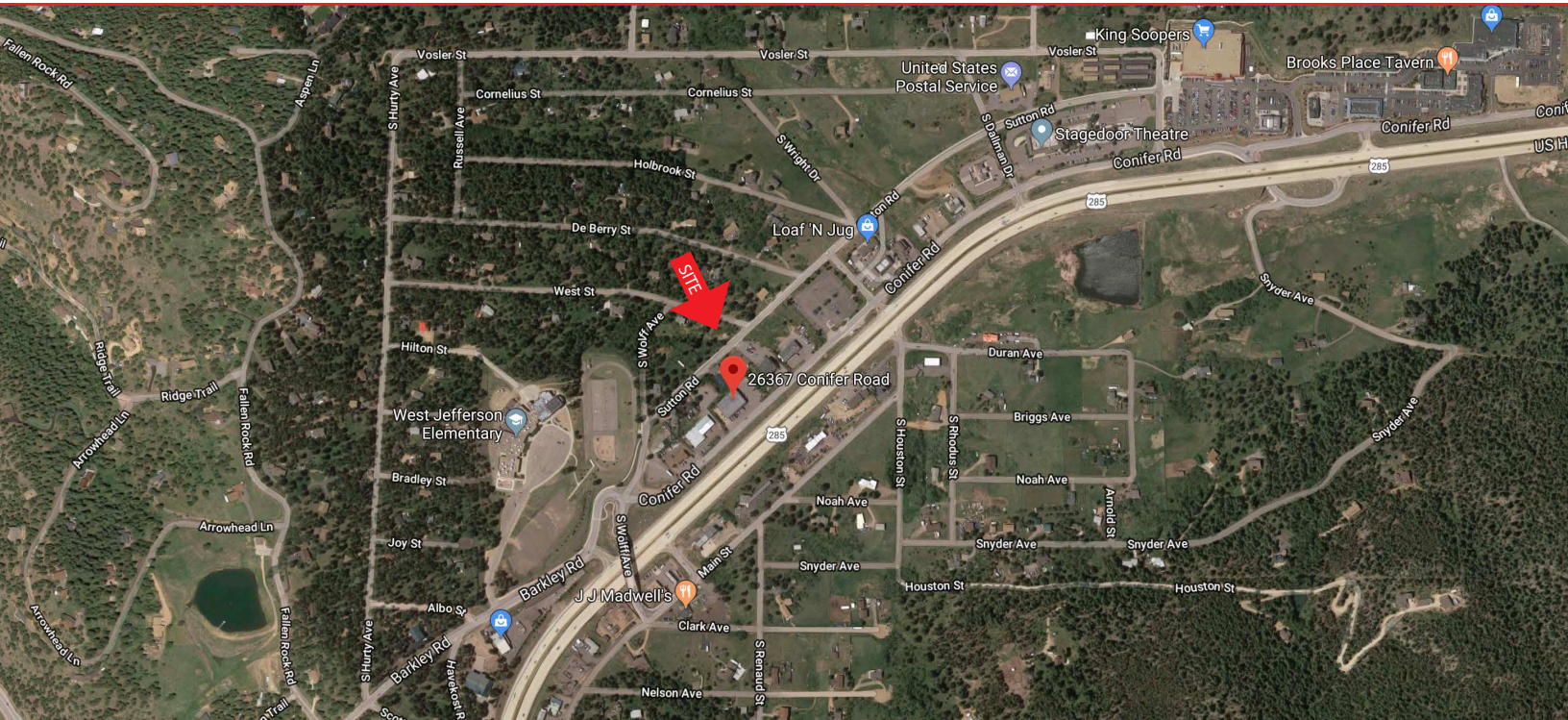
- Five stable tenants total
- Great location in Aspen Park
- Professionally maintained property
- Building visible from Hwy 285
- Well and septic

FOR MORE INFORMATION CONTACT:

JAMIE MACBETH

jmacbeth@gcgcre.com | 720.476.5229

GENESEE COMMERCIAL GROUP, LLC | 710 KIPLING STREET, SUITE 403 | LAKEWOOD, COLORADO 80215 | WWW.GCGCRE.COM



FOR MORE INFORMATION CONTACT:

JAMIE MACBETH

jmacbeth@gcgcre.com | 720.476.5229

GENESEE COMMERCIAL GROUP, LLC | 710 KIPLING STREET, SUITE 403 | LAKEWOOD, COLORADO 80215 | WWW.GCGCRE.COM

No warranty or representation is made as to the accuracy of the foregoing information. Terms of sale or lease and availability are subject to change or withdrawal without notice.