



3042 EVERGREEN PARKWAY Evergreen, Colorado 80439



PROPERTY FEATURES

- Southwestern Adobe Viga style architecture
- Various floor plans with restrooms on both floors
- Located directly off busy Evergreen Parkway
- Retail amenities nearby

BUILDING SPECIFICATIONS

Available:	1st Floor - 3,486 SF	\$22.00/RSF MG
	Suite 200 - 1,159 SF	\$19.00/RSF MG
	Suite 201 - 951 SF	
	Suite 203 - 881 SF	
	Total - 2,991 SF	
		Tenant pays suite janitorial
		Basement storage \$7.00-8.00/SF
Building Size:		6,477 SF
Year Built:		2000
Stories:		2

FOR MORE INFORMATION CONTACT:

JAMIE MACBETH

jmacbeth@gcgcre.com | 720.476.5229

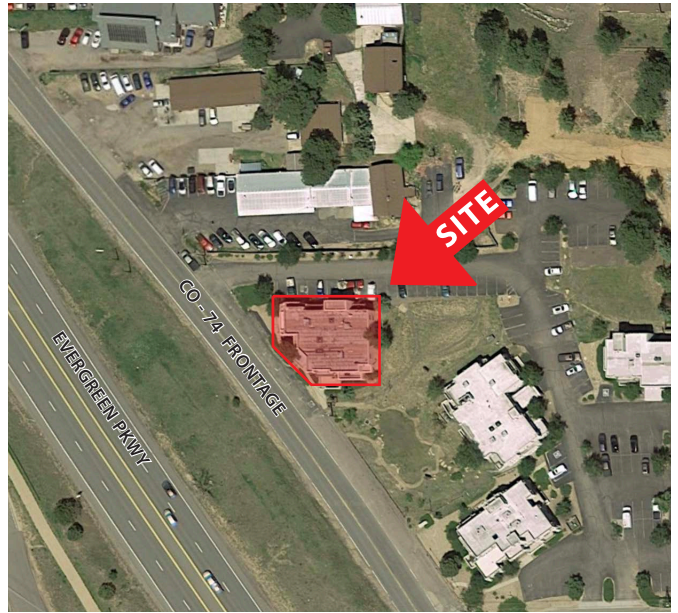
RENÉE SPICER

rspicer@gcgcre.com | 720.476.5226



GENESEE
COMMERCIAL
GROUP, LLC

3042 EVERGREEN PARKWAY
Evergreen, Colorado 80439



No warranty or representation is made as to the accuracy of the foregoing information. Terms of sale or lease and availability are subject to change or withdrawal without notice.

FOR MORE INFORMATION CONTACT:

JAMIE MACBETH

jmacbeth@gcgcre.com | 720.476.5229

RENÉE SPICER

rspicer@gcgcre.com | 720.476.5226

GENESEE COMMERCIAL GROUP, LLC | 710 KIPLING STREET, SUITE 403 | LAKEWOOD, COLORADO 80215 | WWW.GCGCRE.COM