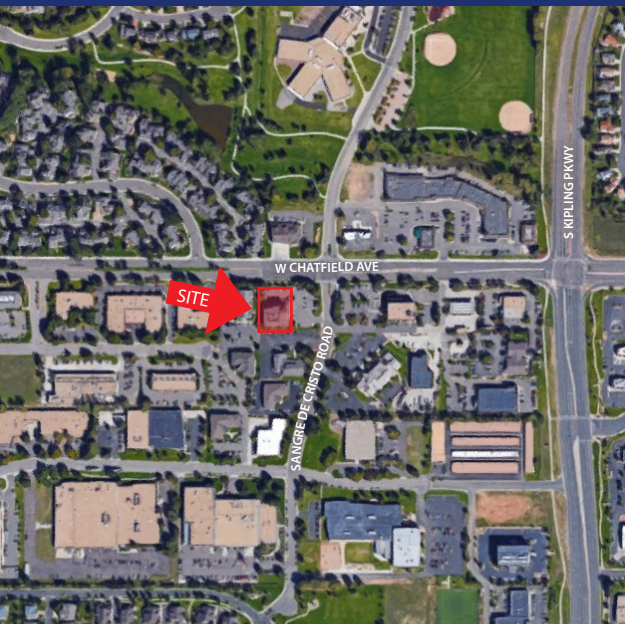




8321 S. SANGRE DE CRISTO ROAD Littleton, Colorado 80127

PROPERTY FEATURES

- Great Location Near C-470 and S. Kipling
- Retail/Restaurants Close-By
- Atrium Lobby Full of Natural Light



BUILDING SPECIFICATIONS

Available:

Suite 204: 2,271 RSF \$17.00/RSF Gross

Total Building SF:

17,434 RSF

FOR MORE INFORMATION CONTACT:

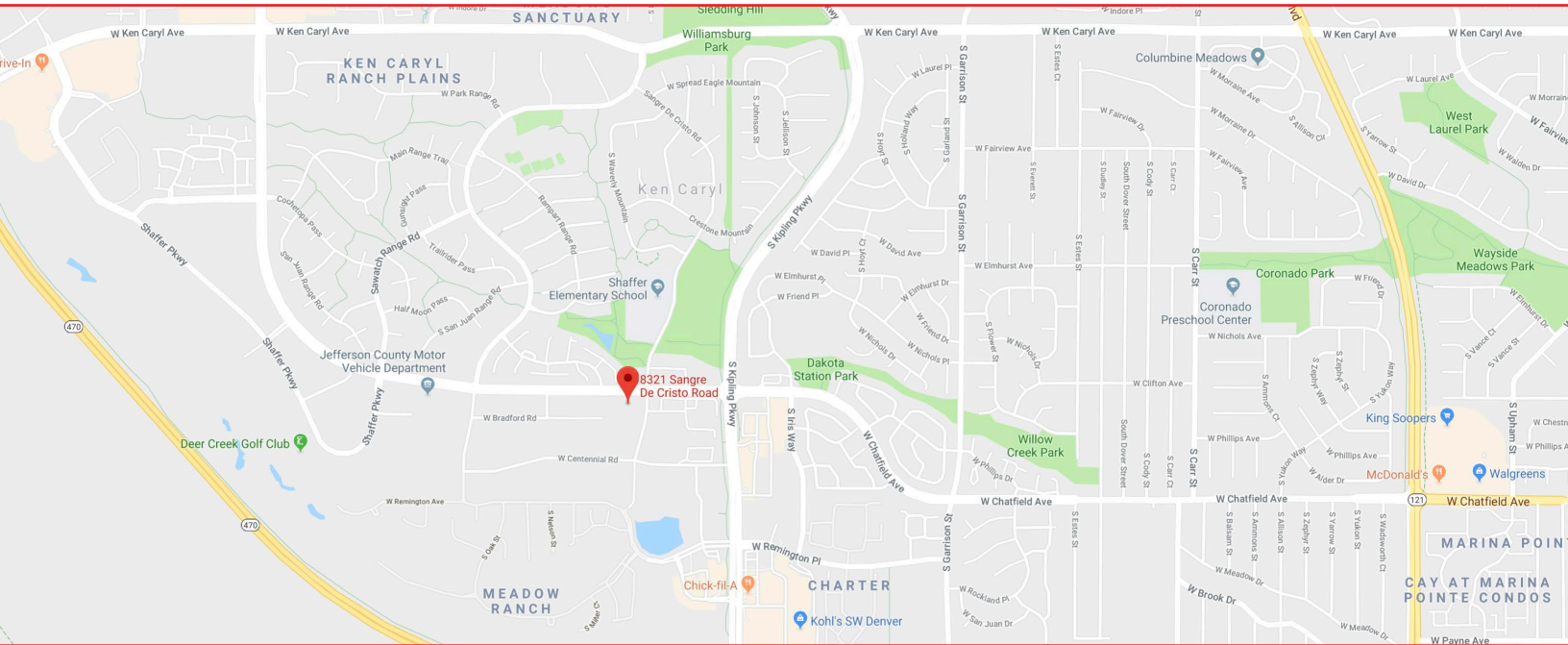
WILLIAM NETWAL
wnetwal@gcgcre.com | 720.476.5228

JAMIE MACBETH
jmacbeth@gcgcre.com | 720.476.5229

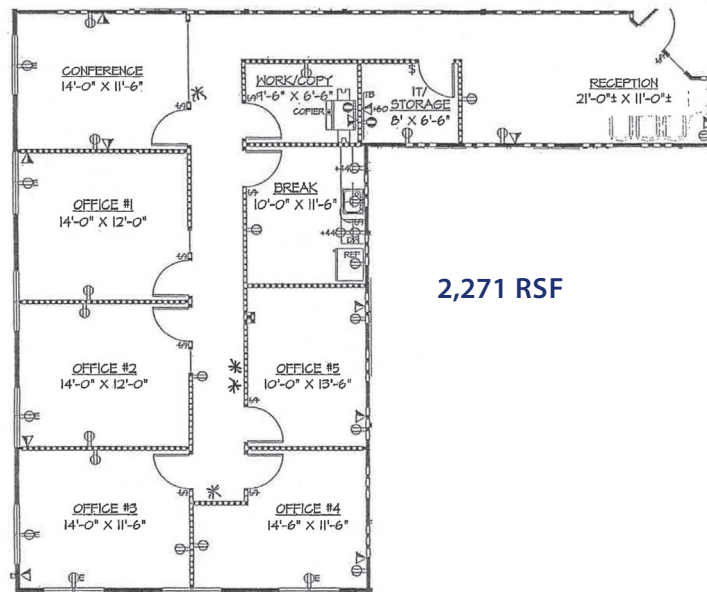


GENESEE
COMMERCIAL
GROUP, LLC

8321 S. SANGRE DE CRISTO ROAD
Littleton, Colorado 80127



SUITE 204



FOR MORE INFORMATION CONTACT:

WILLIAM NETWAL
wnetwal@gcgcre.com | 720.476.5228

JAMIE MACBETH
jmacbeth@gcgcre.com | 720.476.5229

GENESEE COMMERCIAL GROUP, LLC | 710 KIPLING STREET, SUITE 403 | LAKEWOOD, COLORADO 80215 | WWW.GCGCRE.COM

No warranty or representation is made as to the accuracy of the foregoing information. Terms of sale or lease and availability are subject to change or withdrawal without notice.