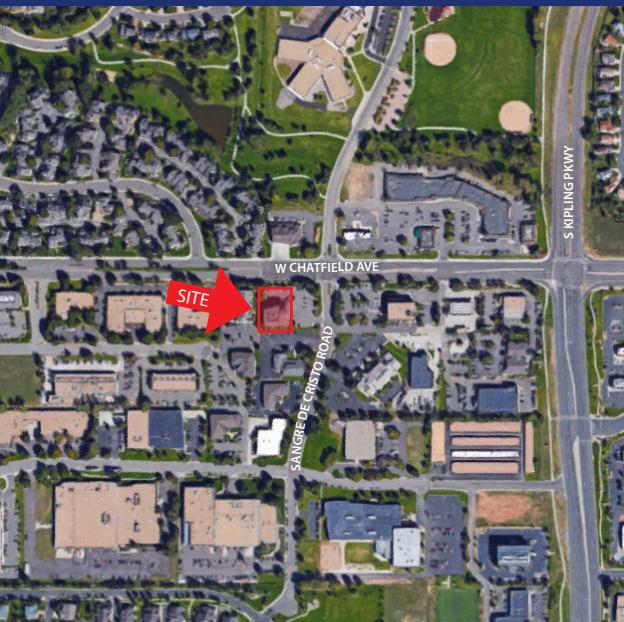




8321 S. SANGRE DE CRISTO ROAD Littleton, Colorado 80127

PROPERTY FEATURES

- Great Location Near C-470 and S. Kipling
- Retail/Restaurants Close-By
- Atrium Lobby Full of Natural Light



BUILDING SPECIFICATIONS

Available:	Suite 204:	2,271 RSF	\$17.00/RSF Gross
	Suite 302:	1,959 RSF	\$17.00/RSF Gross
Total Building SF:			17,434 RSF

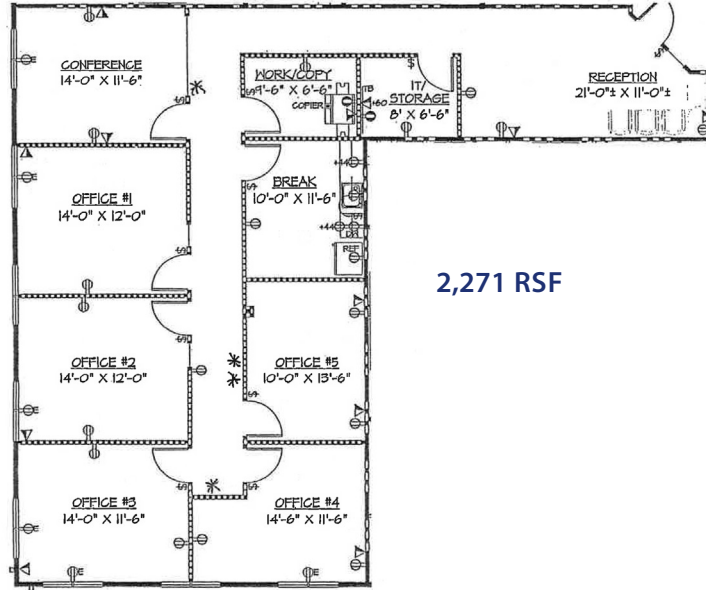
FOR MORE INFORMATION CONTACT:

WILLIAM NETWAL
wnetwal@gcgcre.com | 720.476.5228

JAMIE MACBETH
jmacbeth@gcgcre.com | 720.476.5229

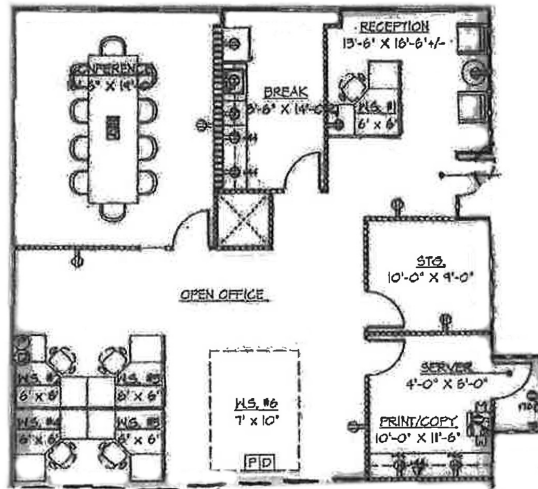


SUITE 204



2,271 RSF

SUITE 302



1,959 RSF

FOR MORE INFORMATION CONTACT:

WILLIAM NETWAL
wnetwal@gcgcre.com | 720.476.5228

JAMIE MACBETH
jmacbeth@gcgcre.com | 720.476.5229