



**8805 W. 14th AVENUE**  
Lakewood, Colorado 80215



## PROPERTY SPECIFICATIONS

The Lakewood Medical Center is a three story building with an elevator. Sitting on 2.02 acres of land. Built in 1980 of wood frame, stone and stucco. Ample parking at 5:1,000 ratio. Located 2 blocks from both West Colfax Avenue and the Light Rail stop at 13th and Garrison.

## PROPERTY FEATURES

<b>Sale Price:</b>	\$1,795,000	<b>Elevator:</b>	1
<b>Sale Price per SF:</b>	\$59.74/SF	<b>Parking Ratio:</b>	5:1,000
<b>Building Size:</b>	30,048 SF	<b>Taxes:</b>	\$40,294.00 (2017)
<b>Size/Acres:</b>	2.08 Acres or 88,035 SF	<b>Zoned:</b>	Lakewood: M-N-U
<b>Year Built:</b>	1980	<b>Construction:</b>	Wood Frame, Stone & Stucco
<b>Stories:</b>	3		

**FOR MORE INFORMATION CONTACT:**

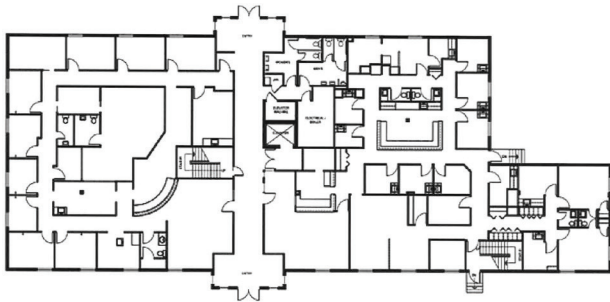
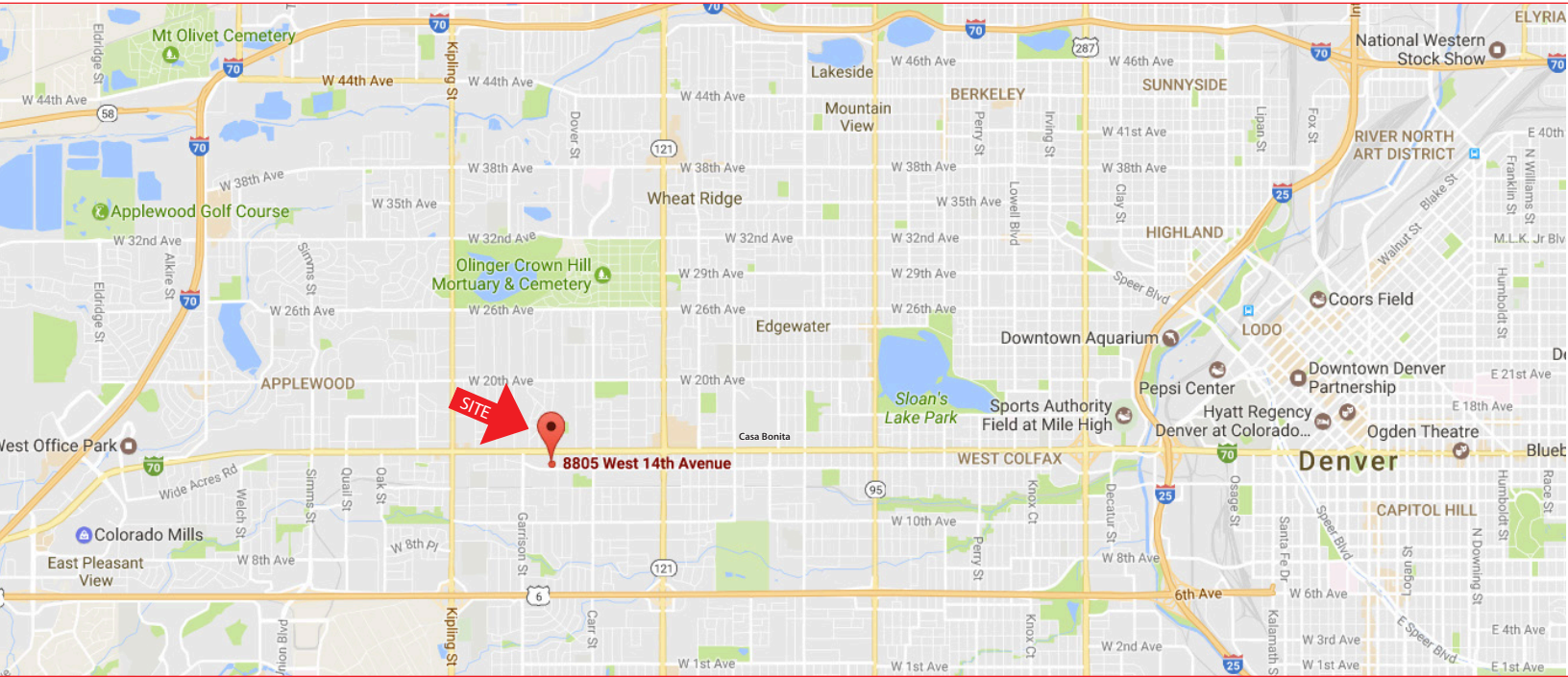
**TIM P. ROGERS**  
trogers@gcgcre.com | 720.476.5225

**JAMIE MACBETH**  
jmacbeth@gcgcre.com | 720.476.5229



**GENESEE**  
COMMERCIAL  
GROUP, LLC

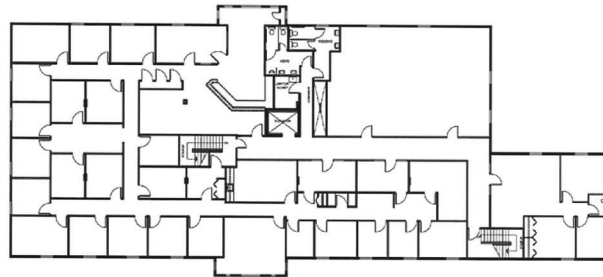
**8805 W. 14th AVENUE**  
Lakewood, Colorado 80215



**FIRST FLOOR**



**SECOND FLOOR**



**THIRD FLOOR**

**FOR MORE INFORMATION CONTACT:**

**TIM P. ROGERS**  
trogers@gcgcre.com | 720.476.5225

**JAMIE MACBETH**  
jmacbeth@gcgcre.com | 720.476.5229

GENESEE COMMERCIAL GROUP, LLC | 710 KIPLING STREET, SUITE 403 | LAKEWOOD, COLORADO 80215 | WWW.GCGCRE.COM

No warranty or representation is made as to the accuracy of the foregoing information. Terms of sale or lease and availability are subject to change or withdrawal without notice.